



POCHETTE

FOULARD

POCHETTE





Subject:

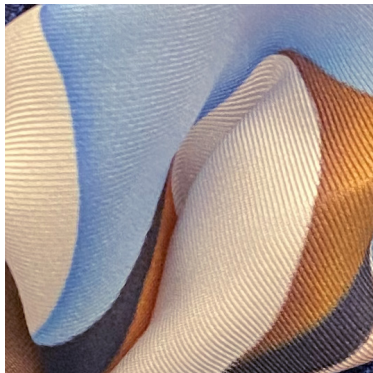
## ESPLOSIONE (EXPLOSION)

A racing pulse, a short breath as when facing a dazzling light, feeling disorientated by all the sensations that are being experienced.

- POCLETTE • SILK TWILL
- WHITE BORDERS
- W30cm x L30cm
- MADE IN ITALY

FOULARD

FOULARD





Subject:

## ESPLOSIONE (EXPLOSION)

A racing pulse, a short breath as when facing a dazzling light, feeling disorientated by all the sensations that are being experienced.

- FOULARD · SILK TWILL
- WHITE BORDERS
- W60cm x L60cm
- MADE IN ITALY



Subject:

## BACIO (KISS)

The start of all, the meeting. The union of two that before were one.

- FOULARD • SILK TWILL  
(wood effect)
- BLUE BORDERS
- W60cm x L60cm
- MADE IN ITALY



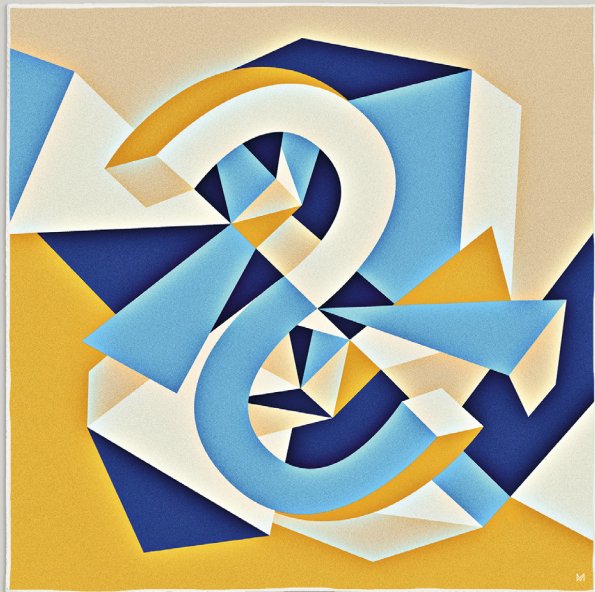


Subject:

## PENSIERI (THOUGHTS)

Reflections in movement as the enter and leave the mind. Thoughts that we can look after and protect as we do with a diary that only we may open.

- FOULARD · SILK TWILL
- WHITE BORDERS
- W90cm x L90cm
- MADE IN ITALY

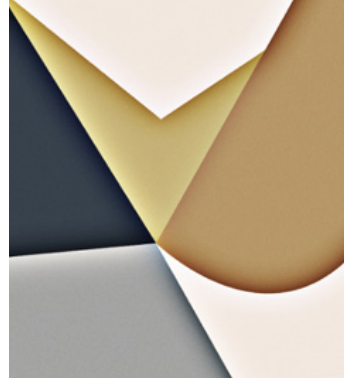


Subject:

## SPECCHIO (MIRROR)

A play of reflections, fragments of mirrors and suspended worlds. Doors and portals that lead into the unknown and disorientate but they may also suggest a way out.

- FOULARD • SILK TWILL  
(sand effect)
- WHITE BORDERS
- W90cm x L90cm
- MADE IN ITALY



Subject:

## BENE/MALE (GOOD/EVIL)

The eternal battle of Mankind, the choice between good and evil. We can push ourselves to react or block every attempt to proceed and let oneself go. Two opposite sides to every soul.

- FOULARD · SILK TWILL
- WHITE BORDERS
- W90cm x L90cm
- MADE IN ITALY

